

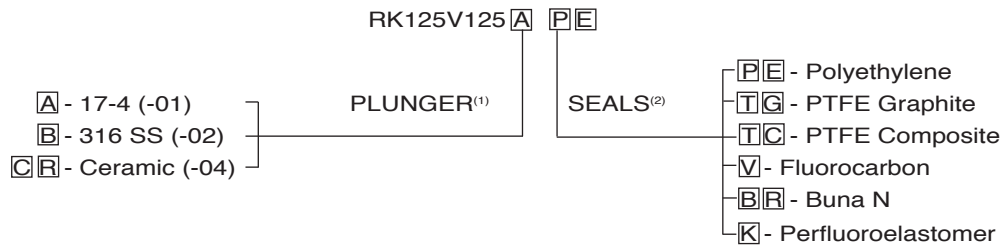


P125V & X SERIES PUMP REPAIR KITS

REPAIR KIT NO. - RK125V125-□□⁽¹⁾-□□⁽²⁾

PART NUMBER	DESCRIPTION	QUANTITY
BR-014-90	O-RING/BUNA N	1
CV202235	DISCHARGE CHECK VALVE	1
CV202240	SUCTION CHECK VALVE	1
MC102217	PISTON GUIDE RING	1
MC102223	MOTOR RETURN SPRING	1
MC125-02BR	PISTON U-CUP-BUNA N	1
PP202219-□□ ^{(1)*}	PISTON/PLUNGER ASSEMBLY	1
SS125V-□□ ^{(2)*}	PLUNGER SEAL SET	1
G321M1	1oz. SILICON GREASE	1
OR102384	SEALING RING - TFE	1

(1) & (2): To order the proper plunger and seal materials, please indicate the appropriate letter as shown in the example below.



NOTE: The pump repair kits for the X Series plunger pumps are identical to the V Series shown above.

SEAL KIT NO. - SK125V125-□□⁽¹⁾

PART NUMBER	DESCRIPTION	QUANTITY
BR-014-90	O-RING/BUNA N	1
BR-016	O-RING/BUNA N	1
BR-111	O-RING/BUNA N	1
MC102217	PISTON GUIDE RING	1
MC125-02BR	PISTON U-CUP-BUNA N	1
SS125V-□□ ^{(1)*}	PLUNGER SEAL SET	2
T-012	PTFE O-RING	2
G321M1	1oz. SILICON GREASE	1
OR102384	SEALING RING - TFE	1

(1): To order the proper plunger seal materials for a seal kit, please indicate the appropriate letter as shown below. All other seal materials in the seal kit will remain the same unless specified otherwise at the placement of order.

Example: SK125V125-**PE** • Change **PE** to **TG** for PTFE Graphite.

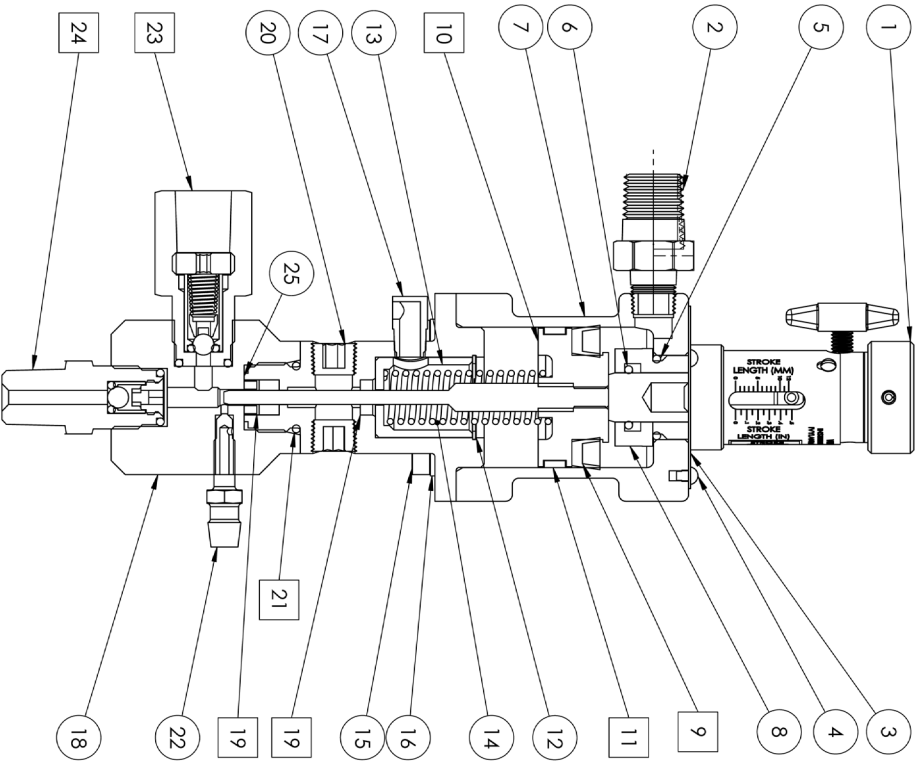
- PE** - Polyethylene
- TG** - PTFE Graphite
- TC** - PTFE Composite
- V** - Fluorocarbon
- BR** - Buna N
- K** - Perfluoroelastomer

(1): The letters following the dash will correspond to the seals selected in (1).

NOTE: The seal repair kits for the X Series plunger pumps are identical to the V Series shown above.

* Equivalent material substitution without notice.

P125V & X SERIES PUMP PARTS LIST



ITEM	DESCRIPTION	NO. REQ'D	P125V or P125X
1	ASSY - STROKE ADJUSTER - 125	1	SA202311
2	CONNECTOR NIPPLE	1	OS39R
3	DATA PLATE	1	DP202199
4	DRIVE SCREW - DATA PLATE	3	S3216D
5	O-RING-PISTON STOP, BUNA N	1	BR-016
6	O-RING-PLUNGER, BUNA N	1	BR-111
7	MOTOR CYLINDER	1	MC202224
8	PISTON STOP - CYLINDER	1	MC202191
9	U CUP-PISTON, BUNA N	1	MC125-02BR
10	ASSY - PISTON/PLUNGER (SEE NOTE 1)	1	PP202219
11	GUIDE RING-PISTON	1	MC102217
12	RETAINER-SPRING SEAT	1	MC102147
13	SEAT-SPRING	1	MC202137
14	SPRING-PISTON RETURN	1	MC102223
15	SCREW, 8-32 X 1/2 SHCS	1	A83212SHCS
16	WASHER #8 SS SPLIT LOCK	4	W8L
17	VENT PLUG, 1/16 NPT	4	PP102143
18	ASSY - BODY & FLUID CYLINDER	1	PP302277
19	PLUNGER SEAL SET (SEE NOTE 2)	1	SS125V
20	PLUG - 1/8 NPT	2	OS601
21	O-RING - BODY SEAL	1	BR-014-90
22	BLEEDER PLUG W/ HOSE BARB	1	BV202222
23	ASSY - CV2 DISCHARGE CHECK VALVE	1	CV202235
23a	SPRING	1	CV101065
23b	3/16" BALL - 316 SS	1	CV2-25
23c	CHECK VALVE BODY	1	CV202236
23d	BALL SEAT	1	CV202237
23e	SLEEVE	1	CV202238
23f	RETAINER	1	CV202239
23g	O-RING/PTFE	1	T-007
23h	O-RING - CHECK VALVE	1	T-012
24	ASSY - CV2 SUCTION CHECK VALVE	1	CV202240
24a	3/16" BALL - 316 SS	1	CV2-25
24b	CHECK VALVE BODY	1	CV202241
24c	SLEEVE	1	CV202263
24d	RETAINER SLEEVE	1	CV202264
24e	O-RING/PTFE	1	T-007
24f	O-RING - CHECK VALVE	1	T-012
25	SEALING RING	1	OR102384
N/A	PUMP REPAIR KIT (SEE NOTES 1 & 2)	1	RK125V125A-PE
N/A	SEAL KIT (SEE NOTE 2)	1	SK125V125-PE
N/A	PLUNGER SEAL SET (SEE NOTE 2)	1	SS125V-PE

REPAIR KITS: The items identified with the symbol  are contained in a complete pump repair kit. The repair kits listed above contain the standard materials. Alternate plunger and seal materials must be specified separately.

NOTE 1: PLUNGER (Item #10). Designate the proper plunger material by adding a dash number to the base part number. For 17-4 ph (-01), for 316 SS (-02) and for ceramic (-04).

NOTE 2: PLUNGER SEAL SETS (Item #19). Seals must be compatible with the chemical used. Designate the proper seal material by adding a dash number to the base part number. For Polyethylene (-PE), PTFE Graphite (-TG), PTFE Composite (-TC), Fluorocarbon (-V), Buna N (-BN) or Perfluoroelastomer (K). Please specify at placement of order.